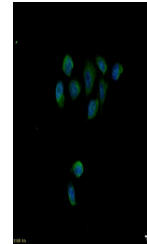


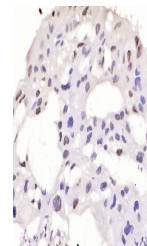
Product Datasheet

Smad2 (phospho-Ser467) antibody (orb783427)

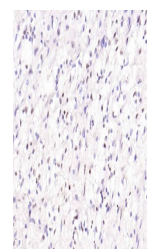
Description	Smad2 (phospho-Ser467) antibody
Species/Host	Rabbit
Reactivity	Human, Mouse, Rat
Conjugation	Unconjugated
Tested Applications	ICC, IHC-P
Immunogen	KLH conjugated synthesised phosphopeptide derived from human Smad2 around the phosphorylation site of Ser467
Target	phospho-Smad2 (Ser467)
Preservatives	0.01M TBS(pH7.4) with 1% rAlbumin, 0.03% Proclin300 and 50% Glycerol.
Form/Appearance	Liquid
Concentration	1mg/ml
Storage	Maintain refrigerated at 2-8°C for up to 2 weeks. For long term storage store at -20°C in small aliquots to prevent freeze-thaw cycles.
Note	For research use only
Isotype	IgG
Clonality	Polyclonal
MW	58 kDa
Uniprot ID	Q15796
Dilution Range	IHC-P=1:100-500, ICC=1:100
Expiration Date	12 months from date of receipt.



ICC analysis of HeLa cell using phospho-Smad2 antibody



IHC-P analysis of rat placenta using phospho-Smad2 antibody



IHC-P analysis of Human glioblastoma using phospho-Smad2 antibody