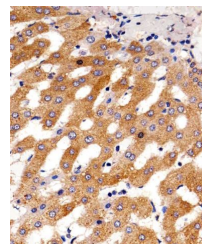


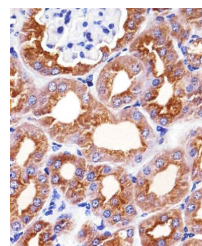
Product Datasheet

PAH antibody (orb783401)

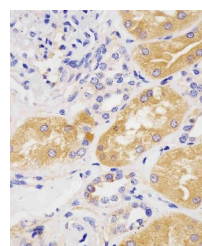
Description	PAH antibody
Species/Host	Mouse
Reactivity	Human, Mouse, Rat
Conjugation	Unconjugated
Tested Applications	IHC-P, WB
Immunogen	KLH conjugated synthetic peptide derived from human PAH (121-300/452 aa)
Target	PAH
Preservatives	0.01M TBS(pH7.4) with 1% rAlbumin, 0.03% Proclin300 and 50% Glycerol.
Form/Appearance	Liquid
Concentration	1mg/ml
Storage	Shipped at 4°C. Store at -20 °C for one year. Avoid repeated freeze/thaw cycles.
Note	For research use only
Isotype	IgG1, κ
Clonality	Monoclonal
MW	52 kDa
Uniprot ID	P00439
Dilution Range	WB=1:500-2000, IHC-P=1:100-500
Expiration Date	12 months from date of receipt.



Immunohistochemical staining of human li...



Immunohistochemical staining of human ki...



Immunohistochemical staining of human ki...