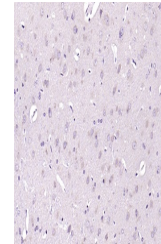


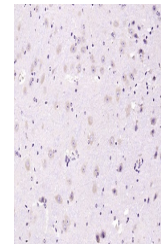
Product Datasheet

LIP5 antibody (orb783374)

Description	LIP5 antibody
Species/Host	Rabbit
Reactivity	Mouse, Rat
Conjugation	Unconjugated
Tested Applications	IHC-P
Immunogen	KLH conjugated synthetic peptide derived from human LIP5 (221-307/307 aa)
Target	LIP5
Preservatives	0.01M TBS(pH7.4) with 1% rAlbumin, 0.03% Proclin300 and 50% Glycerol.
Form/Appearance	Lyophilized or Liquid
Concentration	1mg/ml
Storage	Maintain refrigerated at 2-8°C for up to 2 weeks. For long term storage store at -20°C in small aliquots to prevent freeze-thaw cycles.
Note	For research use only
Isotype	IgG
Clonality	Polyclonal
MW	34 kDa
Uniprot ID	Q9NP79
Dilution Range	IHC-P=1:400-800
Expiration Date	12 months from date of receipt.



IHC-P analysis of rat brain using LIP5 P...



IHC-P analysis of mouse brain using LIP5...