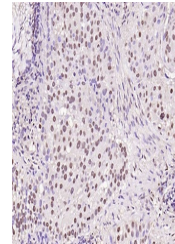


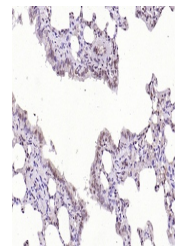
Product Datasheet

AKT1 (phospho-Ser124) antibody (orb783188)

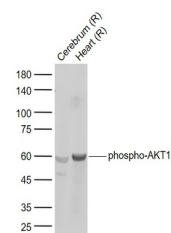
Description	AKT1 (phospho-Ser124) antibody
Species/Host	Rabbit
Reactivity	Human, Rat
Conjugation	Unconjugated
Tested Applications	IHC-P, WB
Immunogen	KLH conjugated synthesised phosphopeptide derived from human AKT1 around the phosphorylation site of Ser124 (SG(p-S)PS)
Target	phospho-AKT1(Ser124)
Preservatives	0.01M TBS(pH7.4) with 1% rAlbumin, 0.03% Proclin300 and 50% Glycerol.
Form/Appearance	Liquid
Concentration	1mg/ml
Storage	Maintain refrigerated at 2-8°C for up to 2 weeks. For long term storage store at -20°C in small aliquots to prevent freeze-thaw cycles.
Note	For research use only
Isotype	IgG
Clonality	Polyclonal
MW	60 kDa
Uniprot ID	P31749
Dilution Range	WB=1:500-2000, IHC-P=1:400-800
Expiration Date	12 months from date of receipt.



IHC-P analysis of human breast carcinoma...



IHC-P analysis of rat lung using phospho...



Western blot: Lane 1: Rat Cerebrum; Lane 2:...