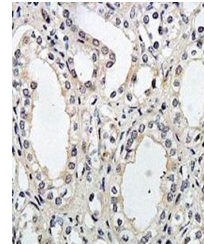


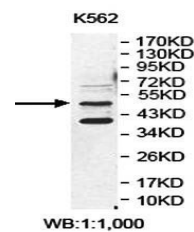
Product Datasheet

ENPP6 antibody (orb78305)

| | |
|----------------------------|---|
| Description | Rabbit polyclonal antibody to ENPP6 |
| Species/Host | Rabbit |
| Reactivity | Human |
| Conjugation | Unconjugated |
| Tested Applications | ELISA, IHC, WB |
| Immunogen | Recombinant fragment corresponding to 25-195 aa of human ENPP6 protein |
| Target | ENPP6 |
| Form/Appearance | Lyophilized powder with 1% rAlbumin and 0.02% NaN ₃ . |
| Storage | Maintain refrigerated at 2-8°C for up to 2 weeks. For long term storage store at -20°C in small aliquots to prevent freeze-thaw cycles. |
| Note | For research use only |
| Application notes | Reconstitute in 100µL of sterile H ₂ O with 50% glycerol. |
| Isotype | IgG |
| Clonality | Polyclonal |
| MW | 50kDa |
| Dilution Range | WB: 1:200-1:1,000 |
| Expiration Date | 12 months from date of receipt. |



Immunohistochemical analysis of formalin...



Western blot analysis of K562 cell lysat...