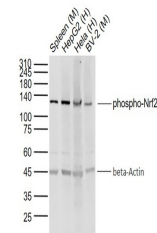


Product Datasheet

Nrf2 (phospho-Ser40) antibody (orb783035)

Description	Nrf2 (phospho-Ser40) antibody
Species/Host	Rabbit
Reactivity	Human, Mouse
Conjugation	Unconjugated
Tested Applications	WB
Immunogen	KLH conjugated Synthesised phosphopeptide derived from human Nrf2 around the phosphorylation site of Ser40 (DF(p-S)QR)
Target	phospho-Nrf2 (Ser40)
Preservatives	0.01M TBS(pH7.4) with 1% rAlbumin, 0.03% Proclin300 and 50% Glycerol.
Form/Appearance	Liquid
Concentration	1mg/ml
Storage	Shipped at 4°C. Store at -20°C for one year. Avoid repeated freeze/thaw cycles.
Note	For research use only
Isotype	IgG
Clonality	Polyclonal
MW	68 kDa
Uniprot ID	Q16236
Dilution Range	WB=1:500-2000
Expiration Date	12 months from date of receipt.



Western blot: Lane 1: Spleen (Mouse); Lane ...