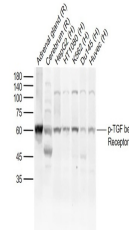


Product Datasheet

TGF Beta Receptor II (phospho-Ser225) antibody (orb783033)

Description	TGF Beta Receptor II (phospho-Ser225) antibody
Species/Host	Rabbit
Reactivity	Human, Rat
Conjugation	Unconjugated
Tested Applications	WB
Immunogen	KLH conjugated synthesised phosphopeptide derived from human TGF beta Receptor II around the phosphorylation site of Ser225 (DR(p-S)DI)
Target	phospho-TGF beta Receptor II (Ser225)
Preservatives	0.01M TBS(pH7.4) with 1% rAlbumin, 0.03% Proclin300 and 50% Glycerol.
Form/Appearance	Liquid
Concentration	1mg/ml
Storage	Maintain refrigerated at 2-8°C for up to 2 weeks. For long term storage store at -20°C in small aliquots to prevent freeze-thaw cycles.
Note	For research use only
Isotype	IgG
Clonality	Polyclonal
MW	62 kDa
Uniprot ID	P37173
Dilution Range	WB=1:500-2000
Expiration Date	12 months from date of receipt.



Western blot: Lane
1: Rat Adrenal gland; La...