

---

## Product Datasheet

### Filaggrin antibody (orb782914)

**Description**

Filaggrin antibody

**Species/Host**

Rabbit

**Reactivity**

Human, Mouse, Rat

**Conjugation**

Unconjugated

**Tested Applications**

ELISA, IHC-P

**Immunogen**

KLH conjugated synthetic peptide derived from human Filaggrin. Please contact us for the exact immunogen sequence. The peptide is available as orb374724.

**Target**

Filaggrin

**Form/Appearance**

10 mM PBS, 0.02% sodium azide

**Concentration**

- 100 µg (in 200 µl): 0.5 mg/ml- 200 µg (in 400 µl): 0.5 mg/ml

**Storage**

Store at 4°C for up to two weeks. For long term storage, aliquot and store at -20°C, avoid freeze/thaw cycles.

**Note**

For research use only

**Isotype**

IgG

**Clonality**

Polyclonal

**Purity**

Polyclonal antibodies are purified by peptide affinity chromatography

**MW**

34 kDa

**Uniprot ID**

[P20930](#), [P11088](#)

**NCBI**

[002016](#), [002007](#), [11](#)

**Entrez**

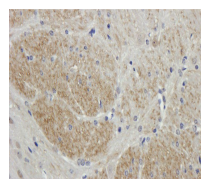
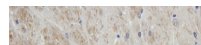
[2312](#)

**Dilution Range**

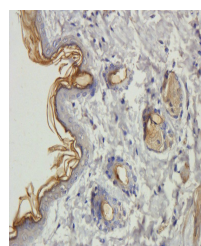
IHC-P: 1:100-500 (based on 0.5 mg/ml)

**Expiration Date**

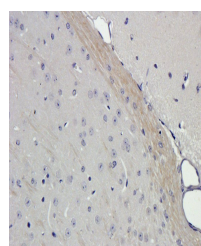
12 months from date of receipt.



Immunohistochemical staining of mouse brain...



Immunohistochemical staining of paraffin...



Immunohistochemical staining of paraffin...