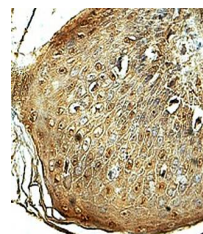


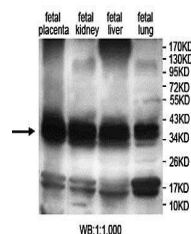
Product Datasheet

ANXA8L2 antibody (orb78217)

Description	Rabbit polyclonal antibody to ANXA8L2
Species/Host	Rabbit
Reactivity	Human
Conjugation	Unconjugated
Tested Applications	ELISA, IHC, WB
Immunogen	Recombinant fragment corresponding to 77-265a of human ANXA8L2 protein
Target	ANXA8L2
Form/Appearance	Lyophilized powder with 1% rAlbumin and 0.02% NaN ₃ .
Storage	Maintain refrigerated at 2-8°C for up to 2 weeks. For long term storage store at -20°C in small aliquots to prevent freeze-thaw cycles.
Note	For research use only
Application notes	Reconstitute in 100µL of sterile H ₂ O with 50% glycerol.
Isotype	IgG
Clonality	Polyclonal
MW	37kDa
Dilution Range	WB: 1:200-1:1,000
Expiration Date	12 months from date of receipt.



Immunohistochemical analysis of formalin...



Western blot analysis of fetal placenta