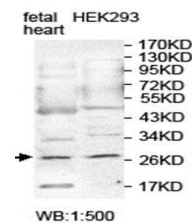


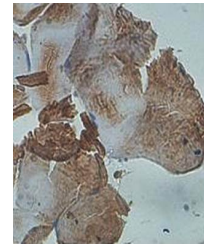
Product Datasheet

PID1 antibody (orb78096)

Description	Rabbit polyclonal antibody to PID1
Species/Host	Rabbit
Reactivity	Human
Conjugation	Unconjugated
Tested Applications	ELISA, IHC, WB
Immunogen	Recombinant fragment corresponding to 83-250aa of human PID1 protein
Target	PID1
Form/Appearance	Lyophilized powder with 1% rAlbumin and 0.02% NaN3.
Storage	Maintain refrigerated at 2-8°C for up to 2 weeks. For long term storage store at -20°C in small aliquots to prevent freeze-thaw cycles.
Note	For research use only
Application notes	Reconstitute in 100µL of sterile H2O with 50% glycerol.
Isotype	IgG
Clonality	Polyclonal
MW	20KD
Dilution Range	WB: 1:200-1:1,000
Expiration Date	12 months from date of receipt.



Western blot analysis of HEK293 cell and...



Immunohistochemical analysis of formalin...