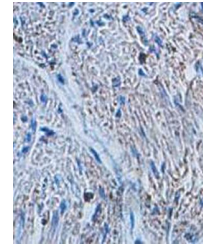


Product Datasheet

ITM2A antibody (orb78089)

Description	Rabbit polyclonal antibody to ITM2A
Species/Host	Rabbit
Reactivity	Human
Conjugation	Unconjugated
Tested Applications	ELISA, IHC
Immunogen	Recombinant fragment corresponding to 108-253aa of human ITM2A protein
Target	ITM2A
Form/Appearance	Lyophilized powder with 1% rAlbumin and 0.02% NaN ₃ .
Storage	Maintain refrigerated at 2-8°C for up to 2 weeks. For long term storage store at -20°C in small aliquots to prevent freeze-thaw cycles.
Note	For research use only
Application notes	Reconstitute in 100µL of sterile H ₂ O with 50% glycerol.
Isotype	IgG
Clonality	Polyclonal
MW	KD
Dilution Range	IHC: 1:100-1:200. ELISA: 1:20,000-1:80,000
Expiration Date	12 months from date of receipt.



Immunohistochemical analysis of formalin...