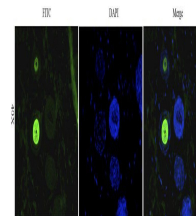


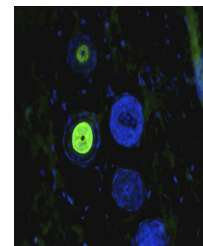
Product Datasheet

CD206 antibody (FITC) (orb7789)

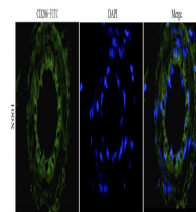
Description	CD206 antibody (FITC)
Species/Host	Rabbit
Reactivity	Mouse, Porcine, Rat
Conjugation	FITC
Tested Applications	ICC, IF
Immunogen	KLH conjugated synthetic peptide derived from human CLEC13D. Please contact us for the exact immunogen sequence.
Target	CD206 (FITC)
Form/Appearance	Liquid: PBS, 2 mM Sodium Azide, 30% glycerol
Concentration	- 100 µg (in 200 µl): 0.5 mg/ml
Storage	Store at 4°C for up to two weeks. For long term storage, aliquot and store at -20°C, avoid freeze/thaw cycles.
Note	For research use only
Isotype	IgG
Clonality	Polyclonal
Purity	Polyclonal antibodies are purified by peptide affinity chromatography
NCBI	NM_002438.3 , NP_002429.1 , NM_002438.31 , NP_002429.11
Entrez	4360
Dilution Range	IF/ICC: 1:50-500
Expiration Date	12 months from date of receipt.



Immunofluorescence image of mouse skin t...



Immunofluorescence analysis of mouse ski...



IF image of mouse skin tissue using anti...