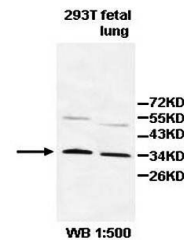


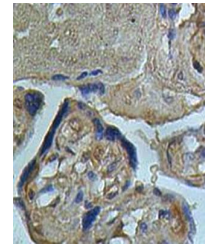
Product Datasheet

PDCL antibody (orb77888)

| | |
|----------------------------|---|
| Description | Rabbit polyclonal antibody to PDCL |
| Species/Host | Rabbit |
| Reactivity | Human |
| Conjugation | Unconjugated |
| Tested Applications | ELISA, IHC, WB |
| Immunogen | Recombinant fragment corresponding to 25-489aa of human PDCL protein |
| Target | PDCL |
| Form/Appearance | Lyophilized powder with 1% rAlbumin and 0.02% NaN3. |
| Storage | Maintain refrigerated at 2-8°C for up to 2 weeks. For long term storage store at -20°C in small aliquots to prevent freeze-thaw cycles. |
| Note | For research use only |
| Application notes | Reconstitute in 100µL of sterile H2O with 50% glycerol. |
| Isotype | IgG |
| Clonality | Polyclonal |
| MW | 34kDa |
| Dilution Range | WB: 1:200-1:1,000 |
| Expiration Date | 12 months from date of receipt. |



Western blot analysis of 293T cell and f...



Immunohistochemical analysis of formalin...