

---

## Product Datasheet

### Human DEFb1 ELISA Kit (orb776575)

**Description**

The test principle applied in this kit is Sandwich

provided...

**Reactivity**

Human

**Range**

0.32-20 ng/mL

**Tested**

ELISA

**Applications**
**Concentration**

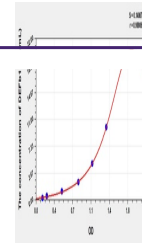
20 ng/mL

**Note**

For research use only

**Application notes**

Standard: 20 ng/mL. Test Principle: The test principle applied in this kit is Sandwich enzyme immunoassay. The microtiter plate provided in this kit has been pre-coated with an antibody specific to Human DEFb1. Standards or samples are added to the appropriate microtiter plate wells then with a biotin-conjugated antibody specific to Human DEFb1. Next, Avidin conjugated to Horseradish Peroxidase (HRP) is added to each microplate well and incubated. After TMB substrate solution is added, only those wells that contain Human DEFb1, biotin-conjugated antibody and enzyme-conjugated Avidin will exhibit a change in color. The enzyme-substrate reaction is terminated by the addition of sulphuric acid solution and the color change is measured spectrophotometrically at a wavelength of 450nm  $\pm$  10nm. The concentration of Human DEFb1 in the samples is then determined by comparing the OD of the samples to the standard curve


**Sample Types**

Serum, plasma, tissue homogenates, cell lysates, cell culture supernates and other biological fluids

**Uniprot ID**

**P60022**

**Sensitivity**

0.138 ng/mL

**Expiration Date**

Please enquire.