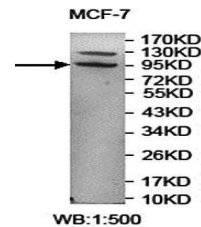


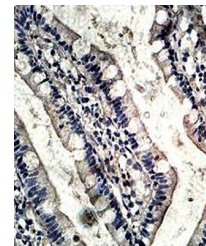
Product Datasheet

TPCN2 antibody (orb77572)

Description	Rabbit polyclonal antibody to TPCN2
Species/Host	Rabbit
Reactivity	Human, Mouse
Conjugation	Unconjugated
Tested Applications	ELISA, IHC, WB
Immunogen	A peptide corresponding to the N terminal region of human TPCN2 protein
Target	TPCN2
Form/Appearance	Lyophilized powder with 1% rAlbumin and 0.02% NaN ₃ .
Storage	Shipped at ambient temperature or with ice bags if in liquid. Store immediately at -20°C upon receipt. Avoid repeating freeze-thaw cycles.
Note	For research use only
Application notes	Reconstitute in 100µL of sterile H ₂ O with 50% glycerol.
Isotype	IgG
Clonality	Polyclonal
MW	85kDa
Dilution Range	WB: 1:200-1:1,000
Expiration Date	12 months from date of receipt.



Western blot analysis of MCF-7 cell lysa...



Immunohistochemical analysis of formalin...