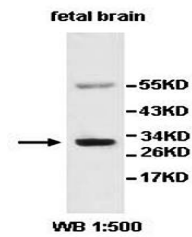


Product Datasheet

AKR7L antibody (orb77547)

Description	Rabbit polyclonal antibody to AKR7L
Species/Host	Rabbit
Reactivity	Human
Conjugation	Unconjugated
Tested Applications	ELISA, IHC, WB
Immunogen	A peptide corresponding to the N terminal region of human AKR7L protein
Target	AKR7L
Form/Appearance	Lyophilized powder with 1% rAlbumin and 0.02% NaN3.
Storage	Maintain refrigerated at 2-8°C for up to 2 weeks. For long term storage store at -20°C in small aliquots to prevent freeze-thaw cycles.
Note	For research use only
Application notes	Reconstitute in 100µL of sterile H2O with 50% glycerol.
Isotype	IgG
Clonality	Polyclonal
MW	27kDa
Dilution Range	WB: 1:200-1:1,000
Expiration Date	12 months from date of receipt.



Western blot analysis of fetal brain lys...



Immunohistochemical analysis of formalin...