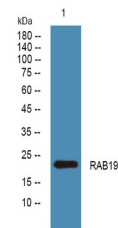


Product Datasheet

RAB19 antibody (orb772989)

Description	Rabbit polyclonal antibody to RAB19
Species/Host	Rabbit
Reactivity	Human, Mouse, Rat
Conjugation	Unconjugated
Tested Applications	ELISA, WB
Immunogen	Synthesized peptide derived from human protein . at AA range: 110-190
Preservatives	PBS with 0.02% sodium azide and 50% glycerol pH 7.4.
Concentration	1 mg/ml
Storage	Store at -20°C. Avoid repeated freeze-thaw cycles.
Note	For research use only
Isotype	IgG
Clonality	Polyclonal
MW	23
Expiration Date	12 months from date of receipt.



Western blot analysis of lysates from A4...