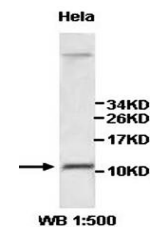


Product Datasheet

osteocalcin antibody (orb77248)

Description	Rabbit polyclonal antibody to osteocalcin
Species/Host	Rabbit
Reactivity	Human, Mouse
Conjugation	Unconjugated
Tested Applications	ELISA, IHC, WB
Immunogen	A peptide corresponding to middle region of mouse osteocalcin protein
Target	Osteocalcin
Form/Appearance	Lyophilized powder with 0.02% NaN ₃ .
Storage	Maintain refrigerated at 2-8°C for up to 2 weeks. For long term storage store at -20°C in small aliquots to prevent freeze-thaw cycles.
Note	For research use only
Application notes	Reconstitute in 100µL of sterile H ₂ O with 50% glycerol.
Isotype	IgG
Clonality	Polyclonal
MW	10kDa
Dilution Range	WB: 1:800-1:2,000, ELISA: 1:20,000-1:80,000
Expiration Date	12 months from date of receipt.



Western blot analysis of HeLa cell lysat...