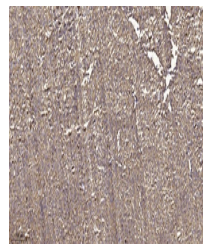


Product Datasheet

WNK2 antibody (orb771984)

Description	Rabbit polyclonal antibody to WNK2
Species/Host	Rabbit
Reactivity	Human, Mouse
Conjugation	Unconjugated
Tested Applications	IHC-P
Immunogen	Synthesized peptide derived from human protein . at AA range: 1120-1200
Preservatives	PBS with 0.02% sodium azide and 50% glycerol pH 7.4.
Concentration	1 mg/ml
Storage	Maintain refrigerated at 2-8°C for up to 2 weeks. For long term storage store at -20°C in small aliquots to prevent freeze-thaw cycles.
Note	For research use only
Isotype	IgG
Clonality	Polyclonal
MW	252
Expiration Date	12 months from date of receipt.



Immunohistochemical analysis of paraffin...