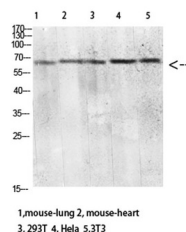


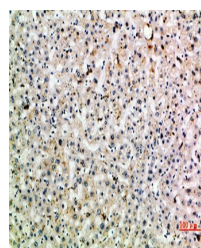
Product Datasheet

CD299 antibody (orb771578)

Description	Rabbit polyclonal antibody to CD299
Species/Host	Rabbit
Reactivity	Human, Mouse, Rat
Conjugation	Unconjugated
Tested Applications	ELISA, IHC-P, WB
Immunogen	Synthetic peptide from human protein at AA range: 271-320
Preservatives	PBS with 0.02% sodium azide and 50% glycerol pH 7.4.
Concentration	1 mg/ml
Storage	Store at -20°C. Avoid repeated freeze-thaw cycles.
Note	For research use only
Isotype	IgG
Clonality	Polyclonal
MW	60
Expiration Date	12 months from date of receipt.



Western blot analysis of mouse-lung tissue.



Immunohistochemical analysis of paraffin-embedded tissue.