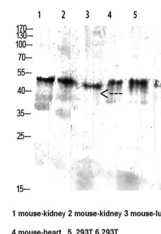


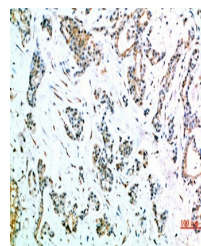
Product Datasheet

CD64 antibody (orb771551)

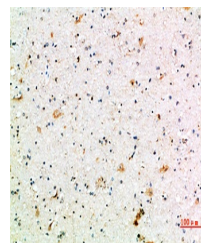
Description	Rabbit polyclonal antibody to CD64
Species/Host	Rabbit
Reactivity	Human
Conjugation	Unconjugated
Tested Applications	ELISA, IHC-P, WB
Immunogen	Synthetic peptide from human protein at AA range: 230-280
Preservatives	PBS with 0.02% sodium azide and 50% glycerol pH 7.4.
Concentration	1 mg/ml
Storage	Maintain refrigerated at 2-8°C for up to 2 weeks. For long term storage store at -20°C in small aliquots to prevent freeze-thaw cycles.
Note	For research use only
Isotype	IgG
Clonality	Polyclonal
MW	45
Expiration Date	12 months from date of receipt.



Western blot analysis of mouse-kidney ly...



Immunohistochemical analysis of paraffin...



Immunohistochemical analysis of paraffin...