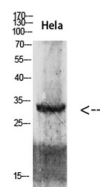


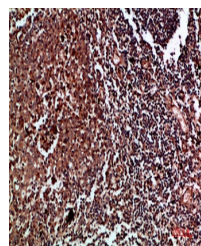
Product Datasheet

Cdk6 antibody (orb771533)

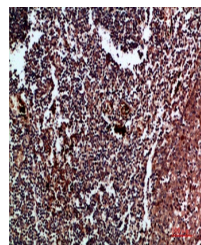
Description	Rabbit polyclonal antibody to Cdk6
Species/Host	Rabbit
Reactivity	Human
Conjugation	Unconjugated
Tested Applications	ELISA, IHC-P, WB
Immunogen	Synthetic peptide from human protein at AA range: 280-325
Preservatives	PBS with 0.02% sodium azide and 50% glycerol pH 7.4.
Concentration	1 mg/ml
Storage	Maintain refrigerated at 2-8°C for up to 2 weeks. For long term storage store at -20°C in small aliquots to prevent freeze-thaw cycles.
Note	For research use only
Isotype	IgG
Clonality	Polyclonal
MW	34
Expiration Date	12 months from date of receipt.



Western blot analysis of 293T HeLa lysat...



Immunohistochemical analysis of paraffin...



Immunohistochemical analysis of paraffin...