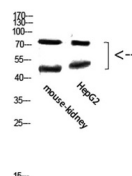


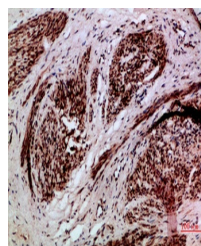
Product Datasheet

TMPO antibody (orb771423)

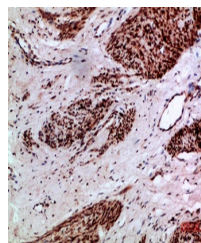
Description	Rabbit polyclonal antibody to TMPO
Species/Host	Rabbit
Reactivity	Human, Mouse, Rat
Conjugation	Unconjugated
Tested Applications	ELISA, WB
Immunogen	Synthetic peptide from human protein at AA range: 1-50
Preservatives	PBS with 0.02% sodium azide and 50% glycerol pH 7.4.
Concentration	1 mg/ml
Storage	Maintain refrigerated at 2-8°C for up to 2 weeks. For long term storage store at -20°C in small aliquots to prevent freeze-thaw cycles.
Note	For research use only
Isotype	IgG
Clonality	Polyclonal
MW	75+50
Expiration Date	12 months from date of receipt.



Western Blot analysis of mouse-kidney, h...



Immunohistochemical analysis of paraffin...



Immunohistochemical analysis of paraffin...