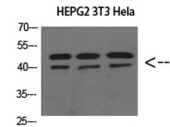


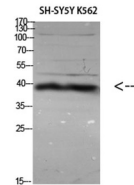
Product Datasheet

ERLIN1/2 antibody (orb771382)

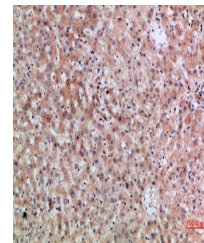
Description	Rabbit polyclonal antibody to ERLIN1/2
Species/Host	Rabbit
Reactivity	Human, Mouse, Rat
Conjugation	Unconjugated
Tested Applications	ELISA, WB
Immunogen	Synthesized peptide derived from ERLIN1/2 at AA range: 31-80
Preservatives	PBS with 0.02% sodium azide and 50% glycerol pH 7.4.
Concentration	1 mg/ml
Storage	Maintain refrigerated at 2-8°C for up to 2 weeks. For long term storage store at -20°C in small aliquots to prevent freeze-thaw cycles.
Note	For research use only
Isotype	IgG
Clonality	Polyclonal
MW	40+42
Expiration Date	12 months from date of receipt.



Western Blot analysis of HEPG2 3T3 HeLa ...



Western Blot analysis of various cells u...



Immunohistochemical analysis of paraffin...