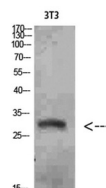


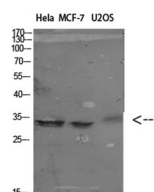
Product Datasheet

Nanos Homologue 1 (NANOS1) antibody (orb771381)

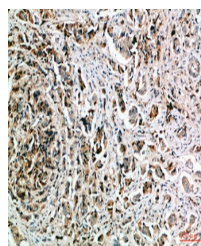
Description	Rabbit polyclonal antibody to Nanos Homologue 1 (NANOS1)
Species/Host	Rabbit
Reactivity	Human
Conjugation	Unconjugated
Tested Applications	ELISA, WB
Immunogen	Synthesized peptide derived from Nanos Homologue 1 (NANOS1) at AA range: 151-200
Preservatives	PBS with 0.02% sodium azide and 50% glycerol pH 7.4.
Concentration	1 mg/ml
Storage	Maintain refrigerated at 2-8°C for up to 2 weeks. For long term storage store at -20°C in small aliquots to prevent freeze-thaw cycles.
Note	For research use only
Isotype	IgG
Clonality	Polyclonal
MW	30
Expiration Date	12 months from date of receipt.



Western Blot analysis of 3T3 cells using...



Western Blot analysis of various cells u...



Immunohistochemical analysis of paraffin...