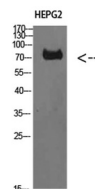


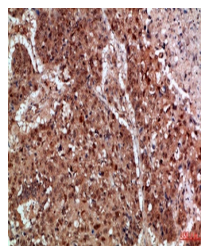
Product Datasheet

TRIF antibody (orb771376)

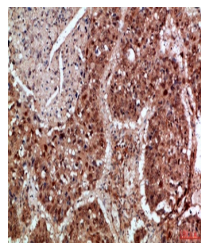
Description	Rabbit polyclonal antibody to TRIF
Species/Host	Rabbit
Reactivity	Human
Conjugation	Unconjugated
Tested Applications	ELISA, WB
Immunogen	Synthesized peptide derived from TRIF at AA range: 663-712
Preservatives	PBS with 0.02% sodium azide and 50% glycerol pH 7.4.
Concentration	1 mg/ml
Storage	Store at -20°C. Avoid repeated freeze-thaw cycles.
Note	For research use only
Isotype	IgG
Clonality	Polyclonal
MW	80
Expiration Date	12 months from date of receipt.



Western Blot analysis of HEPG2 cells usi...



Immunohistochemical analysis of paraffin...



Immunohistochemical analysis of paraffin...