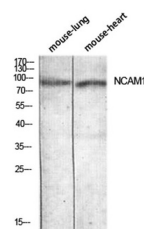


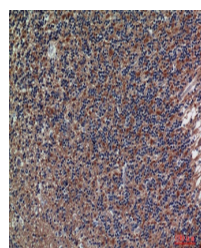
Product Datasheet

CD56 antibody (orb771298)

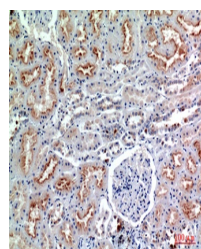
Description	Rabbit polyclonal antibody to CD56
Species/Host	Rabbit
Reactivity	Human
Conjugation	Unconjugated
Tested Applications	ELISA, IHC-P, WB
Immunogen	The antiserum was produced against synthesized peptide derived from the Internal region of human NCAM1. AA range:250-300
Preservatives	PBS with 0.02% sodium azide and 50% glycerol pH 7.4.
Concentration	1 mg/ml
Storage	Store at -20°C. Avoid repeated freeze-thaw cycles.
Note	For research use only
Isotype	IgG
Clonality	Polyclonal
MW	94
Expiration Date	12 months from date of receipt.



Western blot analysis of mouse-lung mous...



Immunohistochemical analysis of paraffin...



Immunohistochemical analysis of paraffin...