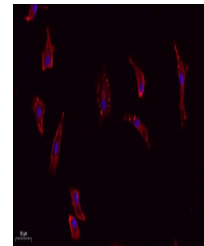


Product Datasheet

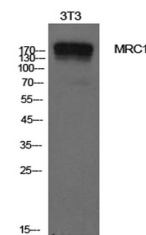
CD206 antibody (orb771289)

Description	Rabbit polyclonal antibody to CD206
Species/Host	Rabbit
Reactivity	Human, Mouse
Conjugation	Unconjugated
Tested Applications	ELISA, IHC-P, WB
Immunogen	The antiserum was produced against synthesized peptide derived from the Internal region of human MRC1. AA range:341-390
Preservatives	PBS with 0.02% sodium azide and 50% glycerol pH 7.4.
Concentration	1 mg/ml
Storage	Maintain refrigerated at 2-8°C for up to 2 weeks. For long term storage store at -20°C in small aliquots to prevent freeze-thaw cycles.
Note	For research use only
Isotype	IgG
Clonality	Polyclonal
MW	170
Expiration Date	12 months from date of receipt.

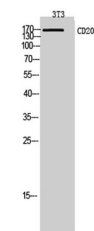


Immunofluorescence analysis of A549. 1,

...



Western Blot analysis of NIH-3T3 cells u...



Western Blot analysis of 3T3 cells using...