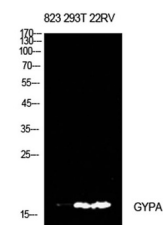


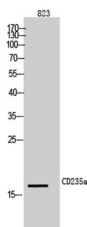
Product Datasheet

CD235a antibody (orb771287)

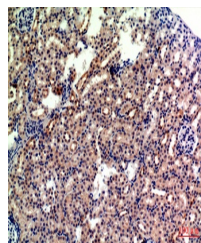
Description	Rabbit polyclonal antibody to CD235a
Species/Host	Rabbit
Reactivity	Human
Conjugation	Unconjugated
Tested Applications	ELISA, IHC-P, WB
Immunogen	The antiserum was produced against synthesized peptide derived from the Internal region of human GYPA. AA range:41-90
Preservatives	PBS with 0.02% sodium azide and 50% glycerol pH 7.4.
Concentration	1 mg/ml
Storage	Store at -20°C. Avoid repeated freeze-thaw cycles.
Note	For research use only
Isotype	IgG
Clonality	Polyclonal
MW	16
Expiration Date	12 months from date of receipt.



Western Blot analysis of 823, 293T, 22RV...



Western Blot analysis of 823 cells using...



Immunohistochemical analysis of paraffin...