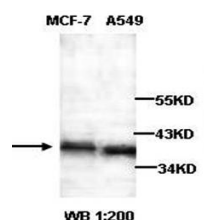


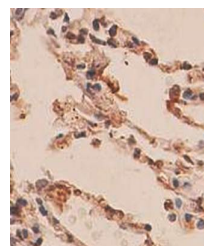
## Product Datasheet

### ARFIP2 antibody (orb77114)

|                            |   |
|----------------------------|---|
| <b>Description</b>         | Rabbit polyclonal antibody to ARFIP2  |
| <b>Species/Host</b>        | Rabbit  |
| <b>Reactivity</b>          | Human, Mouse, Rat   |
| <b>Conjugation</b>         | Unconjugated  |
| <b>Tested Applications</b> | ELISA, IHC, WB  |
| <b>Immunogen</b>           | A peptide corresponding to the C terminal region of human ARFIP2 protein  |
| <b>Target</b>              | ARFIP2  |
| <b>Form/Appearance</b>     | Lyophilized powder with 1% rAlbumin and 0.02% NaN3.   |
| <b>Storage</b>             | Maintain refrigerated at 2-8°C for up to 2 weeks. For long term storage store at -20°C in small aliquots to prevent freeze-thaw cycles. |
| <b>Note</b>                | For research use only   |
| <b>Application notes</b>   | Reconstitute in 100µL of sterile H2O with 50% glycerol.   |
| <b>Isotype</b>             | IgG   |
| <b>Clonality</b>           | Polyclonal  |
| <b>MW</b>                  | 38kDa   |
| <b>Dilution Range</b>      | WB: 1:200-1:1,000   |
| <b>Expiration Date</b>     | 12 months from date of receipt.   |



Western blot analysis of MCF-7 and A549 ...



Immunohistochemical analysis of formalin...