

Product Datasheet

Gab 2 (phospho-Ser623) antibody (orb770984)

Description Rabbit polyclonal antibody to Gab 2 (phospho-Ser623)

Species/Host Rabbit

Reactivity Human, Mouse, Rat

Conjugation Unconjugated

Tested Applications ELISA, IHC-P, WB

Immunogen The antiserum was produced against synthesized peptide derived from human Gab2 around the phosphorylation site of Ser623. AA range:589-638

Preservatives PBS with 0.02% sodium azide and 50% glycerol pH 7.4.

Concentration 1 mg/ml

Storage Maintain refrigerated at 2-8°C for up to 2 weeks. For long term storage store at -20°C in small aliquots to prevent freeze-thaw cycles.

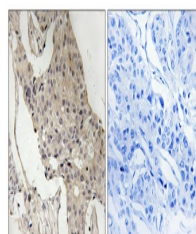
Note For research use only

Isotype IgG

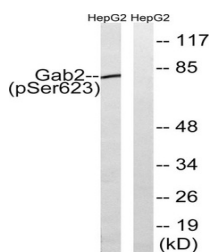
Clonality Polyclonal

MW 80

Expiration Date 12 months from date of receipt.



Immunohistochemistry analysis of paraffi...



Western blot analysis of lysates from He...