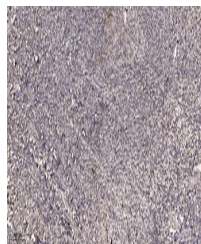


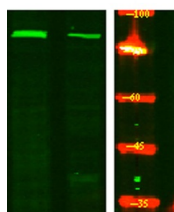
Product Datasheet

ACAP1 (phospho-Ser554) antibody (orb770970)

Description	Rabbit polyclonal antibody to ACAP1 (phospho-Ser554)
Species/Host	Rabbit
Reactivity	Human
Conjugation	Unconjugated
Tested Applications	ELISA, IHC-P
Immunogen	The antiserum was produced against synthesized peptide derived from human Centaurin-beta1 around the phosphorylation site of Ser554. AA range:520-569
Preservatives	PBS with 0.02% sodium azide and 50% glycerol pH 7.4.
Concentration	1 mg/ml
Storage	Maintain refrigerated at 2-8°C for up to 2 weeks. For long term storage store at -20°C in small aliquots to prevent freeze-thaw cycles.
Note	For research use only
Isotype	IgG
Clonality	Polyclonal
Expiration Date	12 months from date of receipt.



Immunohistochemical analysis of paraffin...



Western Blot analysis of Hela treated or...