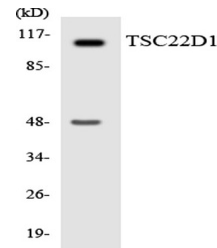


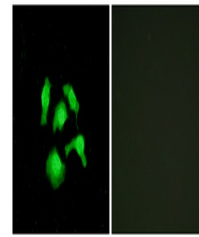
Product Datasheet

TSC-22 antibody (orb770765)

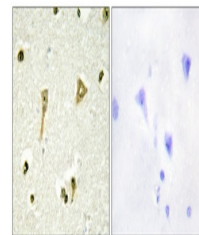
Description	Rabbit polyclonal antibody to TSC-22
Species/Host	Rabbit
Reactivity	Human, Mouse, Rat
Conjugation	Unconjugated
Tested Applications	ELISA, IF, IHC-P, WB
Immunogen	The antiserum was produced against synthesized peptide derived from human TSC22D1. AA range:71-120
Preservatives	PBS with 0.02% sodium azide and 50% glycerol pH 7.4.
Concentration	1 mg/ml
Storage	Store at -20°C. Avoid repeated freeze-thaw cycles.
Note	For research use only
Isotype	IgG
Clonality	Polyclonal
MW	16
Expiration Date	12 months from date of receipt.



Western blot analysis of the lysates fro...



Immunofluorescence analysis of HepG2 cel...



Immunohistochemistry analysis of paraffi...