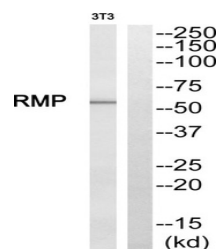


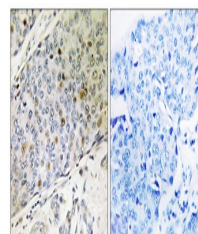
Product Datasheet

RMP antibody (orb770743)

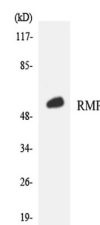
Description	Rabbit polyclonal antibody to RMP
Species/Host	Rabbit
Reactivity	Human
Conjugation	Unconjugated
Tested Applications	ELISA, IHC-P, WB
Immunogen	The antiserum was produced against synthesized peptide derived from human RMP. AA range:415-464
Preservatives	PBS with 0.02% sodium azide and 50% glycerol pH 7.4.
Concentration	1 mg/ml
Storage	Store at -20°C. Avoid repeated freeze-thaw cycles.
Note	For research use only
Isotype	IgG
Clonality	Polyclonal
MW	56
Expiration Date	12 months from date of receipt.



Western blot analysis of RMP Antibody. T...



Immunohistochemistry analysis of paraff...



Western blot analysis of the lysates fro...