

Product Datasheet

CaMKI alpha (phospho-Thr177) antibody (orb770687)

Description Rabbit polyclonal antibody to CaMKI alpha (phospho-Thr177)

Species/Host Rabbit

Reactivity Human, Mouse, Rat

Conjugation Unconjugated

Tested Applications ELISA, IF, IHC-P, WB

Immunogen The antiserum was produced against synthesized peptide derived from human CaMK1-alpha around the phosphorylation site of Thr177. AA range:143-192

Preservatives PBS with 0.02% sodium azide and 50% glycerol pH 7.4.

Concentration 1 mg/ml

Storage Store at -20°C. Avoid repeated freeze-thaw cycles.

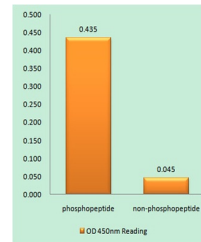
Note For research use only

Isotype IgG

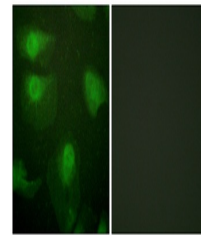
Clonality Polyclonal

MW 41

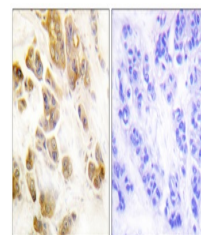
Expiration Date 12 months from date of receipt.



Enzyme-Linked Immunosorbent Assay (Phosp...



Immunofluorescence analysis of HeLa cell...



Immunohistochemistry analysis of paraffi...