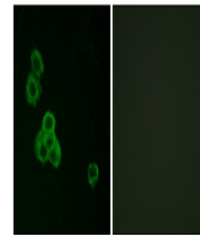


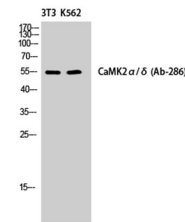
Product Datasheet

CaMKII alpha/delta antibody (orb770518)

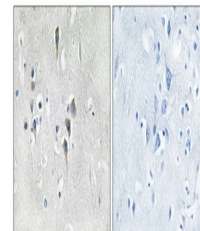
Description	Rabbit polyclonal antibody to CaMKII alpha/delta
Species/Host	Rabbit
Reactivity	Human, Mouse, Rat
Conjugation	Unconjugated
Tested Applications	ELISA, IF, IHC-P, WB
Immunogen	The antiserum was produced against synthesized peptide derived from human CaMK2 alpha/delta. AA range:256-305
Preservatives	PBS with 0.02% sodium azide and 50% glycerol pH 7.4.
Concentration	1 mg/ml
Storage	Store at -20°C. Avoid repeated freeze-thaw cycles.
Note	For research use only
Isotype	IgG
Clonality	Polyclonal
MW	54
Expiration Date	12 months from date of receipt.



Immunofluorescence analysis of MCF7 cell...



Western Blot analysis of NIH-3T3/K562 ce...



Immunohistochemistry analysis of paraffi...