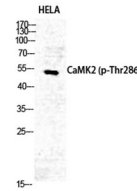


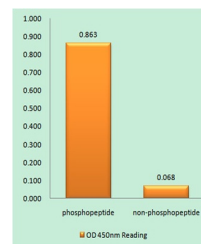
Product Datasheet

CaMKII alpha/delta (phospho-Thr286) antibody (orb770517)

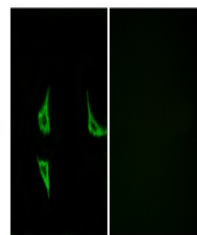
Description	Rabbit polyclonal antibody to CaMKII alpha/delta (phospho-Thr286)
Species/Host	Rabbit
Reactivity	Human, Mouse, Rat
Conjugation	Unconjugated
Tested Applications	ELISA, IF, IHC-P, WB
Immunogen	The antiserum was produced against synthesized peptide derived from human CaMK2 around the phosphorylation site of Thr286. AA range:256-305
Preservatives	PBS with 0.02% sodium azide and 50% glycerol pH 7.4.
Concentration	1 mg/ml
Storage	Store at -20°C. Avoid repeated freeze-thaw cycles.
Note	For research use only
Isotype	IgG
Clonality	Polyclonal
MW	54
Expiration Date	12 months from date of receipt.



Western Blot analysis of HELA cells usin...



Enzyme-Linked Immunosorbent Assay (Phosp...



Immunofluorescence analysis of COS7 cell...