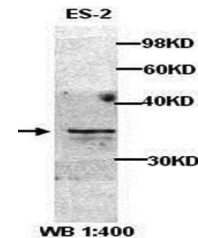


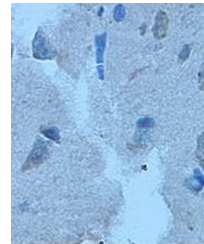
Product Datasheet

Cyclin D1 antibody (orb77046)

Description	Rabbit polyclonal antibody to Cyclin D1
Species/Host	Rabbit
Reactivity	Human, Mouse, Rat
Conjugation	Unconjugated
Tested Applications	ELISA, IHC, WB
Immunogen	A peptide corresponding to the C terminal region of human CCND1 protein
Target	CCND1
Form/Appearance	Lyophilized powder with 1% rAlbumin and 0.02% NaN3.
Storage	Shipped at ambient temperature or with ice bags if in liquid. Store immediately at -20°C upon receipt. Avoid repeating freeze-thaw cycles.
Note	For research use only
Application notes	Reconstitute in 100µL of sterile H2O with 50% glycerol.
Isotype	IgG
Clonality	Polyclonal
MW	34kDa
Dilution Range	WB: 1:200-1:1,000
Expiration Date	12 months from date of receipt.



Western blot analysis of ES-2 cell lysat...



Immunohistochemical analysis of formalin...