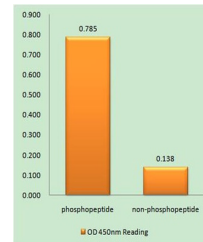


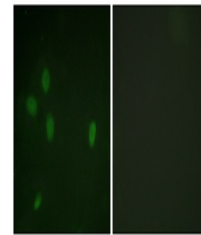
Product Datasheet

53BP1 (phospho-Ser25) antibody (orb770311)

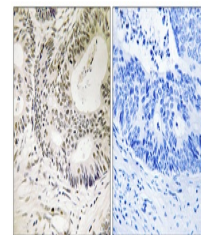
Description	Rabbit polyclonal antibody to 53BP1 (phospho-Ser25)
Species/Host	Rabbit
Reactivity	Human, Mouse, Rat
Conjugation	Unconjugated
Tested Applications	ELISA, IF, IHC-P
Immunogen	The antiserum was produced against synthesized peptide derived from human 53BP1 around the phosphorylation site of Ser25. AA range:10-59
Preservatives	PBS with 0.02% sodium azide and 50% glycerol pH 7.4.
Concentration	1 mg/ml
Storage	Store at -20°C. Avoid repeated freeze-thaw cycles.
Note	For research use only
Isotype	IgG
Clonality	Polyclonal
Expiration Date	12 months from date of receipt.



Enzyme-Linked Immunosorbent Assay (Phosp...



Immunofluorescence analysis of NIH/3T3 c...



Immunohistochemistry analysis of paraffi...