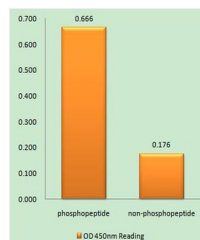


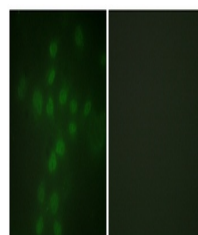
Product Datasheet

TERT (phospho-Ser227) antibody (orb770247)

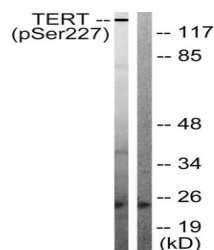
Description	Rabbit polyclonal antibody to TERT (phospho-Ser227)
Species/Host	Rabbit
Reactivity	Human
Conjugation	Unconjugated
Tested Applications	ELISA, IF
Immunogen	The antiserum was produced against synthesized peptide derived from human Telomerase around the phosphorylation site of Ser227. AA range:196-245
Preservatives	PBS with 0.02% sodium azide and 50% glycerol pH 7.4.
Concentration	1 mg/ml
Storage	Maintain refrigerated at 2-8°C for up to 2 weeks. For long term storage store at -20°C in small aliquots to prevent freeze-thaw cycles.
Note	For research use only
Isotype	IgG
Clonality	Polyclonal
Expiration Date	12 months from date of receipt.



Enzyme-Linked Immunosorbent Assay (Phosp...



Immunofluorescence analysis of HUVEC cel...



Western blot analysis of Telomerase (Pho...