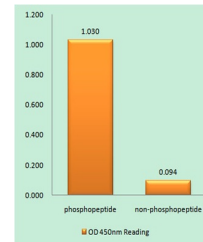


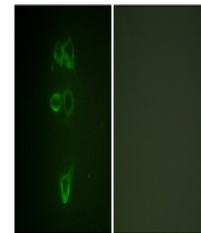
Product Datasheet

Tie-2 (phospho-Tyr1108) antibody (orb770239)

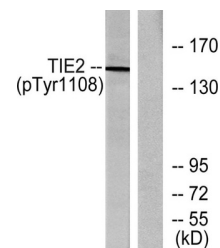
Description	Rabbit polyclonal antibody to Tie-2 (phospho-Tyr1108)
Species/Host	Rabbit
Reactivity	Human, Mouse
Conjugation	Unconjugated
Tested Applications	ELISA, IF, WB
Immunogen	The antiserum was produced against synthesized peptide derived from human TIE2 around the phosphorylation site of Tyr1108. AA range:1074-1123
Preservatives	PBS with 0.02% sodium azide and 50% glycerol pH 7.4.
Concentration	1 mg/ml
Storage	Maintain refrigerated at 2-8°C for up to 2 weeks. For long term storage store at -20°C in small aliquots to prevent freeze-thaw cycles.
Note	For research use only
Isotype	IgG
Clonality	Polyclonal
MW	150
Expiration Date	12 months from date of receipt.



Enzyme-Linked Immunosorbent Assay (Phosp...



Immunofluorescence analysis of HepG2 cel...



Western blot analysis of lysates from NI...