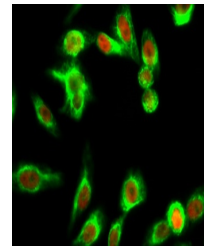


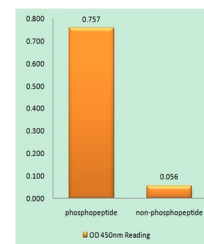
Product Datasheet

LKB1 (phospho-Ser428) antibody (orb770185)

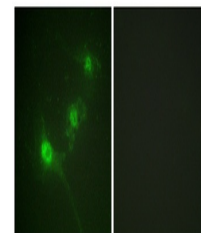
Description	Rabbit polyclonal antibody to LKB1 (phospho-Ser428)
Species/Host	Rabbit
Reactivity	Bovine, Human, Mouse
Conjugation	Unconjugated
Tested Applications	ELISA, IF, IHC-P, WB
Immunogen	The antiserum was produced against synthesized peptide derived from human LKB1 around the phosphorylation site of Ser428. AA range:384-433
Preservatives	PBS with 0.02% sodium azide and 50% glycerol pH 7.4.
Concentration	1 mg/ml
Storage	Store at -20°C. Avoid repeated freeze-thaw cycles.
Note	For research use only
Isotype	IgG
Clonality	Polyclonal
MW	65
Expiration Date	12 months from date of receipt.



Immunofluorescence analysis of HeLa cell...



Enzyme-Linked Immunosorbent Assay (Phosp...



Immunofluorescence analysis of NIH/3T3 C...