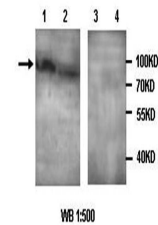


## Product Datasheet

### ADCY3 antibody (orb77018)

<b>Description</b>	Rabbit polyclonal antibody to ADCY3
<b>Species/Host</b>	Rabbit
<b>Reactivity</b>	Human
<b>Conjugation</b>	Unconjugated
<b>Tested Applications</b>	ELISA, IHC, WB
<b>Immunogen</b>	A peptide corresponding to the N terminal of human ADCY3 protein
<b>Target</b>	ADCY3
<b>Form/Appearance</b>	Lyophilized powder with 1% rAlbumin and 0.02% NaN <sub>3</sub> .
<b>Storage</b>	Maintain refrigerated at 2-8°C for up to 2 weeks. For long term storage store at -20°C in small aliquots to prevent freeze-thaw cycles.
<b>Note</b>	For research use only
<b>Application notes</b>	Reconstitute in 100µL of sterile H <sub>2</sub> O with 50% glycerol.
<b>Isotype</b>	IgG
<b>Clonality</b>	Polyclonal
<b>MW</b>	129kDa
<b>Dilution Range</b>	WB: 1:500-1:16,000
<b>Expiration Date</b>	12 months from date of receipt.



Western blot analysis of fetal brain