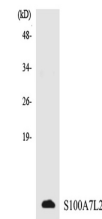


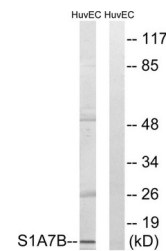
Product Datasheet

S-100A7L2 antibody (orb770061)

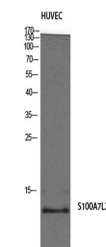
Description	Rabbit polyclonal antibody to S-100A7L2
Species/Host	Rabbit
Reactivity	Human
Conjugation	Unconjugated
Tested Applications	ELISA, WB
Immunogen	The antiserum was produced against synthesized peptide derived from human S100A7L2. AA range:38-87
Preservatives	PBS with 0.02% sodium azide and 50% glycerol pH 7.4.
Concentration	1 mg/ml
Storage	Store at -20°C. Avoid repeated freeze-thaw cycles.
Note	For research use only
Isotype	IgG
Clonality	Polyclonal
MW	11
Expiration Date	12 months from date of receipt.



Western blot analysis of the lysates from...



Western blot analysis of lysates from HU...



Western Blot analysis of HuvEc cells usi...