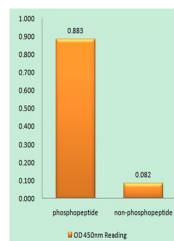


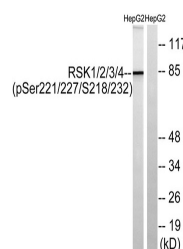
Product Datasheet

Rsk-1/2/3/4 (phospho-Ser221/227/S218/232) antibody (orb769959)

Description	Rabbit polyclonal antibody to Rsk-1/2/3/4 (phospho-Ser221/227/S218/232)
Species/Host	Rabbit
Reactivity	Human, Mouse
Conjugation	Unconjugated
Tested Applications	ELISA, WB
Immunogen	The antiserum was produced against synthesized peptide derived from human RSK1/2/3/4 around the phosphorylation site of Ser221/227/S218/232. AA range:191-240
Preservatives	PBS with 0.02% sodium azide and 50% glycerol pH 7.4.
Concentration	1 mg/ml
Storage	Maintain refrigerated at 2-8°C for up to 2 weeks. For long term storage store at -20°C in small aliquots to prevent freeze-thaw cycles.
Note	For research use only
Isotype	IgG
Clonality	Polyclonal
MW	85
Expiration Date	12 months from date of receipt.



Enzyme-Linked Immunosorbent Assay (Phosp...



Western blot analysis of lysates from He...