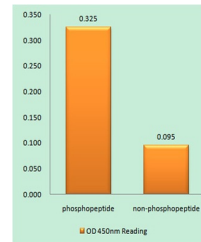


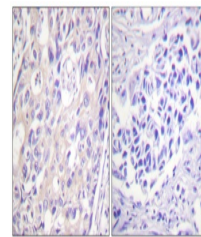
## Product Datasheet

# Rsk-1 (phospho-Thr359/S363) antibody (orb769956)

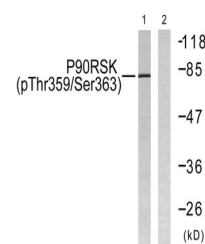
|                            |  |
|----------------------------|--|
| <b>Description</b>         | Rabbit polyclonal antibody to Rsk-1 (phospho-Thr359/S363)  |
| <b>Species/Host</b>        | Rabbit   |
| <b>Reactivity</b>          | Human, Mouse, Rat  |
| <b>Conjugation</b>         | Unconjugated   |
| <b>Tested Applications</b> | ELISA, IHC-P, WB   |
| <b>Immunogen</b>           | The antiserum was produced against synthesized peptide derived from human p90 RSK around the phosphorylation site of Thr359 and Ser363. AA range:331-380 |
| <b>Preservatives</b>       | PBS with 0.02% sodium azide and 50% glycerol pH 7.4.   |
| <b>Concentration</b>       | 1 mg/ml  |
| <b>Storage</b>             | Maintain refrigerated at 2-8°C for up to 2 weeks. For long term storage store at -20°C in small aliquots to prevent freeze-thaw cycles.                  |
| <b>Note</b>                | For research use only  |
| <b>Isotype</b>             | IgG  |
| <b>Clonality</b>           | Polyclonal   |
| <b>MW</b>                  | 83   |
| <b>Expiration Date</b>     | 12 months from date of receipt.  |



Enzyme-Linked Immunosorbent Assay (Phosp...



Immunohistochemistry analysis of paraffi...



Western blot analysis of lysates from 29...