

Product Datasheet

Ribosomal Protein S6 (phospho-Ser240) antibody (orb769953)

Description Rabbit polyclonal antibody to Ribosomal Protein S6 (phospho-Ser240)

Species/Host Rabbit

Reactivity Human, Mouse, Rat

Conjugation Unconjugated

Tested Applications ELISA, IF, IHC-P, WB

Immunogen The antiserum was produced against synthesized peptide derived from human S6 Ribosomal Protein around the phosphorylation site of Ser240. AA range:200-249

Preservatives PBS with 0.02% sodium azide and 50% glycerol pH 7.4.

Concentration 1 mg/ml

Storage Maintain refrigerated at 2-8°C for up to 2 weeks. For long term storage store at -20°C in small aliquots to prevent freeze-thaw cycles.

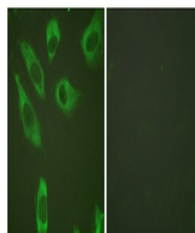
Note For research use only

Isotype IgG

Clonality Polyclonal

MW 28

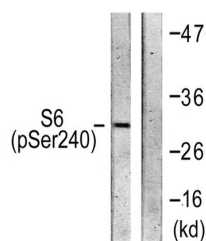
Expiration Date 12 months from date of receipt.



Immunofluorescence analysis of HeLa cell...



Immunohistochemistry analysis of paraffi...



Western blot analysis of lysates from He...