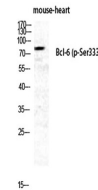


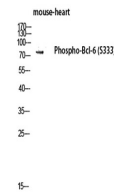
Product Datasheet

Bcl-6 (phospho-Ser333) antibody (orb769923)

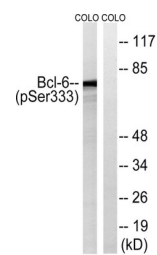
Description	Rabbit polyclonal antibody to Bcl-6 (phospho-Ser333)
Species/Host	Rabbit
Reactivity	Human, Mouse, Rat
Conjugation	Unconjugated
Tested Applications	ELISA, WB
Immunogen	The antiserum was produced against synthesized peptide derived from human Bcl-6 around the phosphorylation site of Ser333. AA range:299-348
Preservatives	PBS with 0.02% sodium azide and 50% glycerol pH 7.4.
Concentration	1 mg/ml
Storage	Maintain refrigerated at 2-8°C for up to 2 weeks. For long term storage store at -20°C in small aliquots to prevent freeze-thaw cycles.
Note	For research use only
Isotype	IgG
Clonality	Polyclonal
MW	79
Expiration Date	12 months from date of receipt.



Western Blot analysis of MOUSE-HEART cel...



Western blot analysis of mouse-heart lys...



Western blot analysis of lysates from CO...