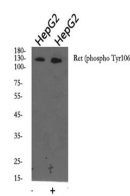


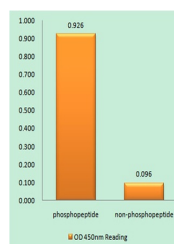
Product Datasheet

Ret (phospho-Tyr1062) antibody (orb769907)

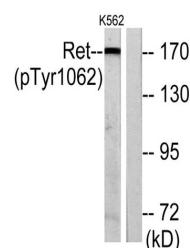
Description	Rabbit polyclonal antibody to Ret (phospho-Tyr1062)
Species/Host	Rabbit
Reactivity	Human, Mouse, Rat
Conjugation	Unconjugated
Tested Applications	ELISA, IHC-P, WB
Immunogen	The antiserum was produced against synthesized peptide derived from human Ret around the phosphorylation site of Tyr1062. AA range:1041-1090
Preservatives	PBS with 0.02% sodium azide and 50% glycerol pH 7.4.
Concentration	1 mg/ml
Storage	Store at -20°C. Avoid repeated freeze-thaw cycles.
Note	For research use only
Isotype	IgG
Clonality	Polyclonal
MW	170
Expiration Date	12 months from date of receipt.



Western blot analysis of Ret (phospho Ty...



Enzyme-Linked Immunosorbent Assay (Phosp...



Western blot analysis of lysates from K5...