

Product Datasheet

MEK-1 (phospho-Ser298) antibody (orb769696)

Description Rabbit polyclonal antibody to MEK-1 (phospho-Ser298)

Species/Host Rabbit

Reactivity Human, Mouse, Rat

Conjugation Unconjugated

Tested Applications ELISA, IHC-P, WB

Immunogen The antiserum was produced against synthesized peptide derived from human MEK1 around the phosphorylation site of Ser298. AA range:264-313

Preservatives PBS with 0.02% sodium azide and 50% glycerol pH 7.4.

Concentration 1 mg/ml

Storage Maintain refrigerated at 2-8°C for up to 2 weeks. For long term storage store at -20°C in small aliquots to prevent freeze-thaw cycles.

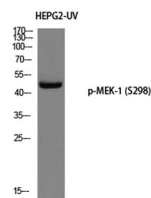
Note For research use only

Isotype IgG

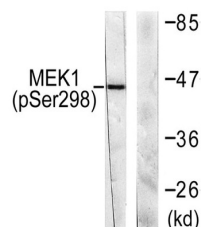
Clonality Polyclonal

MW 45

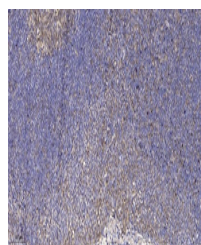
Expiration Date 12 months from date of receipt.



Western blot analysis of HEPG2-UV using ...



Western blot analysis of lysates from NI...



Immunohistochemical analysis of paraffin...